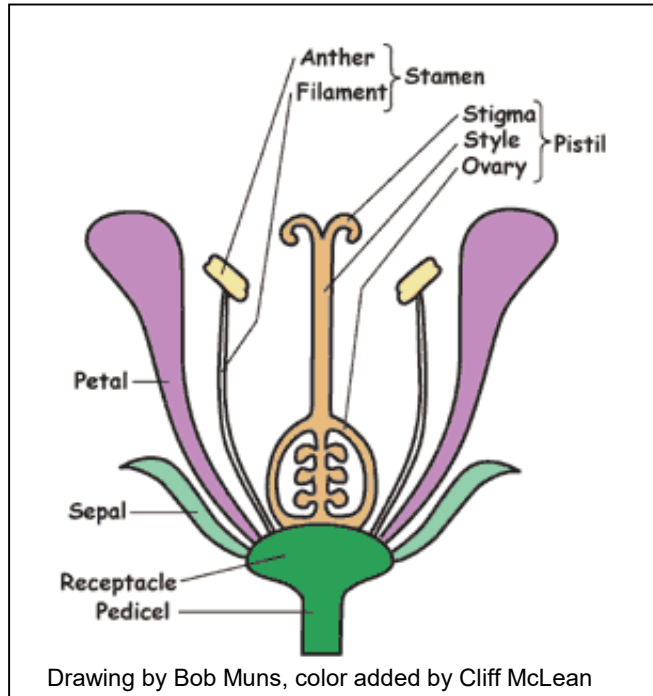




CALIFORNIA  
NATIVE PLANT SOCIETY

## Riverside-San Bernardino Chapter April Program



# Plant Identification Workshop

with Gabi McLean

Co-author of *Common Plants of Eaton Canyon and the San Gabriel Foothills* and *Plants of the San Gabriel Foothills (Field Guides on CD)*

**SATURDAY, APRIL 27, 2019**  
**10:00 AM – NOON**

### Meeting Location

The Riverside-Corona Resource Conservation District, Bldg. F  
4500 Glenwood Drive, Riverside, CA 92501 near Mt. Rubidoux and the  
intersection of Glenwood Dr. and 14<sup>th</sup>. Park in the visitor parking lot and  
follow signs to Bldg. F. For map see: <http://rcrcd.org/#Map>

**Free Parking**

Learn to identify five prominent plant families from our region and representative local native plants. We will have flowers to examine, dissect, and view closeup with microscopes. Fun for all ages!

Gabi is past president of CNPS San Gabriel Mtns Chapter. She teaches Botany for Docents at Eaton Canyon Nature Center.

For information, please contact (951) 640-9549 or send email to: [montalvo@ucr.edu](mailto:montalvo@ucr.edu)

**FIND OUT MORE:**  
*Riverside-San Bernardino Chapter*  
<https://riverside-sanbernardino.cnps.org>

<https://www.facebook.com/CaliforniaNativePlantSocietyRiversideSanBernardino/>